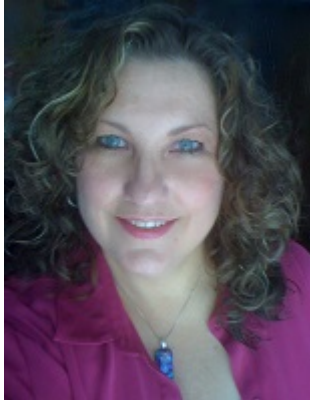


Joan Thomas, M.P.A., C.E.M., A.B.C.P., M.E.P. ^[1]



Joan Thomas is the Director of Emergency Management for the Kidney Community Emergency Response Program, developing and implementing national emergency management and business continuity initiatives and disaster coordination, that includes 18 ESRD Networks covering the United States and its territories under the direction of CMS. She is an adjunct professor at the Metropolitan College of New York, teaching graduate-level courses in emergency management and business continuity. Ms. Thomas earned an MPA in Emergency and Disaster Management and studied advanced security and anti-terrorism with the Israel Military Industries Academy. Ms. Thomas holds FEMA certifications as a Master Exercise Practitioner and Professional Continuity Practitioner. She is also a certified Business Continuity Planner (DRII) and Certified Emergency Manager (IAEM).

© 2017 The Dialysis Patients Citizens (DPC) Education Center. All rights reserved. Unauthorized use prohibited. The information contained in this website is not a substitute for medical advice or treatment, and consultation with your doctor or healthcare professional is strongly recommended. The DPC Education Center is a section 501(c)(3) non-profit charity (37-1698796). Contributions are tax deductible to the fullest extent permitted by the law.

Source URL: <http://www.dpcedcenter.org/joan-thomas-mpa-cem-abcp-mep>

Links

[1] <http://www.dpcedcenter.org/joan-thomas-mpa-cem-abcp-mep>